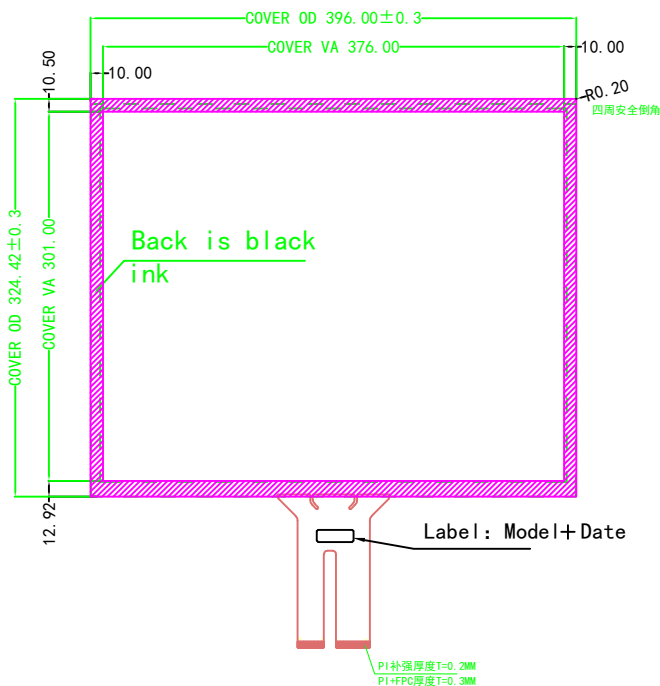
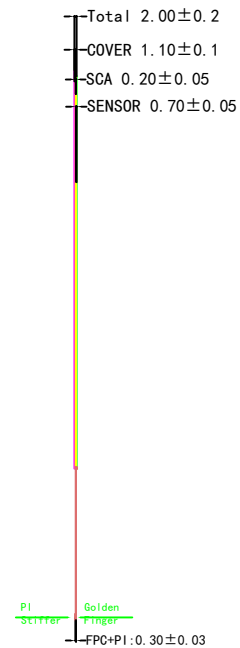


NO.	Rev.	Revision Record	Name	Date
△	A0	首次发行 (OB190007H-AAA基础上改成ILI2510方案)	H	2022-07-15

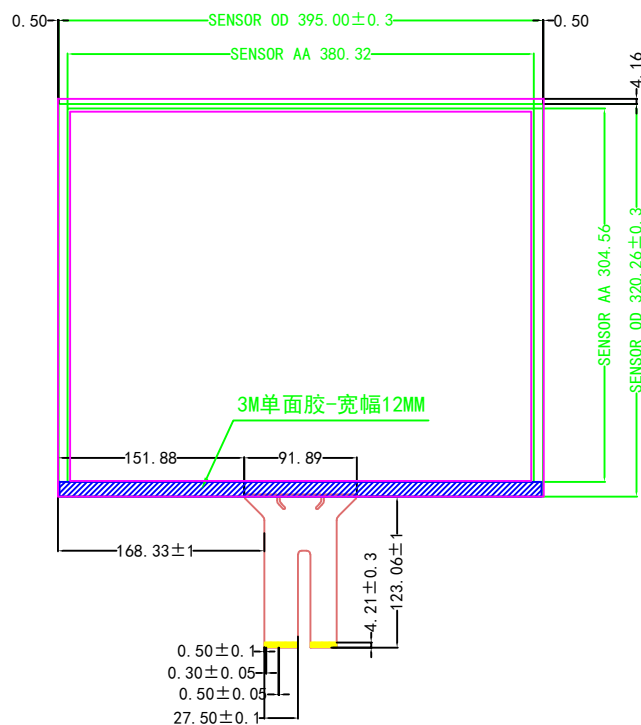
### FRONT



### SIDE

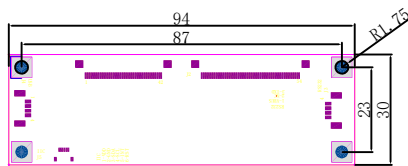


### BACK



#### Technical:

- TP Structure: G+G;
- LENS is Temperature Glass;
- TP Type: COB+PCB; 54P\*42P; Work Voltage: 5V, 10 touch Points; IC: ILI2510;
- Surface Hardness≥6H;
- Transmittance≥85%;
- Unspecified dimensional tolerances ±0.3mm;
- Product meets RoHS standard.
- Work Environment: -20°C~+70°C, ≤85%RH;  
Storage Environment: -20°C~+70°C, ≤85%RH



(3:1)  
Per TP with a PCB

(USB)	
PIN	Define
1	VDD/5V
2	D-
3	D+
4	GND

<b>OBHEY CO., LIMITED</b>		www.obeycrop.com www.obtouch.com	
TITLE: 产品编号	OB190007H-AAA-A2	结构图	
Designed By: 设计	H	Customerid: 客户编号	View: 投影方式
Checked By: 审核		Unit: 单位	mm
Approved By:		Date: 日期	2022-07-15
		Scale: 比例	1:1